

WIDTV1

Mobile TV Receiver



audiovox[®]
mobiletv

WIRELESS
LIVE LOCAL TV
ON THE GO

User's Guide
for Android[®] Devices



NOTE:

The Audiovox MobileTV product will only work in areas where there is coverage of ATSC-MH broadcast signals. Before operating the device, please check for up-to-date information on what stations may be available in your area by visiting: www.dyle.tv/coverage-map.





FCC Caution:

"Changes or modifications not expressly approved by the part responsible for compliance could void the user's authority to operate the equipment."

FCC Statements:

"This device complies with Part 15 of the FCC Rules. Operation is subject to the following two conditions: (1) this device may not cause harmful interference, and (2) This device must accept any interference received, including interference that may cause undesired operation."

"This equipment has been tested and found to comply with the limits for a Class B digital device, pursuant to part 15 of the FCC Rules. These limits are designed to provide reasonable protection against harmful interference in a residential installation. This equipment generates, uses and can radiate radio frequency energy and, if not installed and used in accordance with the instructions, may cause harmful interference to radio communications. However, there is no guarantee that interference will not occur in a particular installation. If this equipment does cause harmful interference to radio or television reception, which can be determined by turning the equipment off and on, the user is encouraged to try to correct the interference by one or more of the following measures:

- Reorient or relocate the receiving antenna.
- Increase the separation between the equipment and receiver.
- Connect the equipment into an outlet on a circuit different from that to which the receiver is connected.
- Consult the dealer or an experienced radio/TV technician for help."

Safety Instructions

- Read this entire User's Guide to ensure proper usage.
- Keep this User's Guide handy for future reference.
- Do not use the WIDTV1 Mobile TV Receiver while driving, cycling, or operating any moving vehicle or apparatus. This is dangerous and may result in a traffic violation and may be illegal in some areas.
- Keep the WIDTV1 Mobile TV Receiver away from all liquids and liquid-prone locations such as sinks, bathtubs, rain, and other sources of moisture. Moisture can cause electric shock as with any electronic device.
- Clean the WIDTV1 Mobile TV Receiver with a soft lint-free cloth.
- Do not allow children under the age of 6 to use the WIDTV1 Mobile TV Receiver unsupervised.
- Never force any connector into the WIDTV1 Mobile TV Receiver USB and antenna ports. Ensure that your connectors are the identical shape and size before you connect.
- Do not disassemble, crush, short-circuit or incinerate the WIDTV1 Mobile TV Receiver battery, as it may cause fire, injury, burns or other hazards.

Disposal Instructions

Do not dispose of the device with unsorted waste. Improper disposal may be harmful to the environment and human health. Consult with your local waste authority for information on the return and collection systems in your area.



Table of Contents

Introduction	1
Package Contents.....	1
Features.....	2
System Requirements	2
Trademark Notice	2
Installation Instructions.....	3
Operation Instructions	4
LED Behavior and Functionality	4
Activating the Audiovox mobiletv with Dyle™ TV app.....	4
Scan for Channels	6
Watch Mobile Live TV	7
Guide Menu	9
Settings Menu	10
Troubleshooting	13
Warranty	14



INTRODUCTION

Thank you for purchasing the Audiovox WIDTV1 Mobile TV Receiver. The WIDTV1 is an efficient, user-friendly accessory for viewing live free-to-air TV content on compatible Android® devices, and is compatible with ATSC-M/H digital TV transmissions. The WIDTV1 creates its own private Wi-Fi® network for use by the Android® device and there is no need to search for an internet connection or use cellular data airtime. Download the free Audiovox mobiletv with Dyle™ TV app from Google Play®, watch TV and enjoy.

Highlights

- View live digital TV (ATSC-M/H broadcasts) on compatible Android® devices.
- Pause and rewind programs while viewing
- Access to detailed programming information (Electronic Programming Guide - EPG)
- Equipped with internal battery for over 4 hours of viewing time

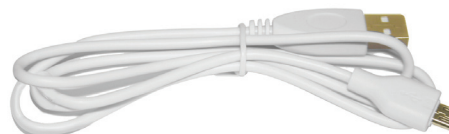
PACKAGE CONTENTS

1. WIDTV1 Mobile TV Receiver
2. Telescopic Antenna
3. Micro USB Cable
4. Quick Start Guide

①



③



②



④



FEATURES

Live TV

With the Audiovox mobiletv with Dyle™ TV app, users can view, and pause live TV.

Guide

The EPG (Electronic Programming Guide) can support up to 7 days of TV programming depending upon the region. Detailed information can be viewed for each program in the guide.

Auto-scan

The application automatically selects the country using location services. If location services are disabled, country selection can be made prior to the auto-scan.

Audio

Users can choose from a selection of audio tracks if supported by the broadcast. Audio can be switched ON and OFF when viewing live TV.

Zoom

The application supports up to five different zoom levels depending on the original resolution and aspect ratio of the broadcast. The following zoom modes are supported: 1x, 1.5x, 2x, Standard, and Fill. The Zoom feature can be selected from the settings menu while viewing or by double tapping on the screen itself while watching live TV.

Volume Control

Users can control the volume while viewing live TV using the application volume control. Volume can be also controlled using the Android® device volume controls.

SYSTEM REQUIREMENTS

Designed for use with advanced Android® devices using Android® 4.0.3 or newer, such as Samsung® Galaxy S2/S3, Note/Note2, Google® Nexus 7, Asus® TF300, HTC® One and others (WIDTV1 Mobile TV Receiver was tested with a select list of manufacturers and models only).

TRADEMARK NOTICE

- Android® / Nexus® / Google Play® and Google® are all trademarks of Google® Inc. All rights reserved. Google® and the Google® Logo are registered trademarks of Google® Inc. in the U.S. and other countries.
- Asus® is a registered trademark of ASUSTeK Computer in the U.S. and/or other countries.
- HTC® is a registered trademark of HTC® Corporation. All Rights Reserved. HTC®, the HTC® logo, HTC® Innovation, ExtUSB, and HTC® Care are trademarks and/or service marks of HTC® Corporation.
- SAMSUNG® is a trademark of Samsung® Group, Samsung® Electronics in the United States or other countries.
- Wi-Fi® is a registered trademark of the Wireless Fidelity Alliance, Inc.
- DYLE™ and DYLE logo are trademarks of and copyright Mobile Content Venture LLC.
- Siano® is a registered trademark of Siano Mobile Silicon, Ltd.



INSTALLATION INSTRUCTIONS

1. Charge the WIDTV1 Mobile TV Receiver fully before initial operation.
 - Plug the supplied USB charging cable into a USB port.
 - Insert the Micro USB charging cable connector into the WIDTV1 Mobile TV Receiver and the red "Charge" LED will illuminate.
 - When the WIDTV1 Mobile TV Receiver is fully charged, the red "Charge" LED will turn OFF.
2. Download and install the free Audiovox mobiletv with Dyle™ TV app from Google Play®.
3. Open the application and perform the sign in process.
4. Turn the WIDTV1 Mobile TV Receiver ON by sliding the ON/OFF switch to the ON position. The blue "Power" LED will illuminate.

NOTE: While the WIDTV1 is in use, the blue "Power" LED will turn off 10 minutes before the battery is depleted.

5. Release and fully extend the telescopic antenna from its docked position and swivel it to an upright position.
6. Place the WIDTV1 Mobile TV Receiver in a suitable location close to a window where it will not be subjected to moisture or excessive heat.
7. Connecting your Android® device to the WIDTV1 Mobile TV Receiver via Wi-Fi.

Option 1. (Connectivity through the Android® device settings manager)

- a. Use your Android® device at a maximum of 7 meters distance from the WIDTV1 Mobile TV Receiver
- b. Go to the Wi-Fi® settings on your Android® device and search for the "Audiovox MobileTV xxxxxx" network
- c. Activate the Audiovox mobiletv with Dyle™ TV app.

NOTE: The "xxxxxx" notation in the network name represents the last six digits of the WIDTV1 Mobile TV Receiver MAC address.

Option 2. (Connectivity through the Audiovox mobiletv with Dyle™ TV app)

- a. Use your Android® device at a maximum of 7 meters distance from the WIDTV1 Mobile TV Receiver.
- b. Navigate to "Select Device" in the settings menu of the Audiovox mobiletv with Dyle™ TV app;
- c. Select the device to connect to, Audiovox Mobile TV xxxxxx, and a check mark will appear confirming selection.

NOTE: The "xxxxxx" notation in the network name represents the last six digits of the WIDTV1 Mobile TV Receiver MAC address.

8. Scan for channels.
 - a. Channels must be scanned in order to watch live TV with the app, go to;
Settings > Scan Channels > Scan
 - NOTE:** The Channel Scan progress bar will be displayed and the process may take several minutes to complete.
 - b. When channels are found, the number of channels will be displayed. If channels are not found, re-perform the channel scan process.
 - c. Once the channel scan is complete, press DONE.
9. To view available TV channels, select Live TV and a list of channels will be displayed. Select a listed channel to watch live TV.
10. To access the electronic program guide, select Guide to view program information.
11. The Settings feature is used to scan for channels, monitor battery life, etc.



OPERATION INSTRUCTIONS

LED Behavior and Functionality

The Audiovox WIDTV1 Mobile TV Receiver has two LEDs – blue for power indication, and red for battery charge indication. Following is a detailed list of each LED functionality:

Blue LED:

- When the device is powered ON – the Blue LED flashes for 3 seconds, pauses for 1 second and then continues blinking for an additional 8 seconds. This function is normal and indicates that the device is booting up and loading its internal firmware.
- Once the previous function is complete, and during normal operation (i.e., the app is connected [or disconnected] and Live TV may be streaming) the LED is constantly ON.
- When the device goes into Sleep mode (as determined by the Sleep Timer, which is configurable in the app Settings menu), the LED starts to flash very slowly (once every 4 seconds).

Red LED:

- When charging Red LED is OFF - The charging cable is not connected.
- When charging Red LED is ON - The charging cable is connected and battery is charging.
- When Red LED turns OFF - The charging cable is connected and battery is full.

Activating the Audiovox mobiletv with Dyle™ TV app

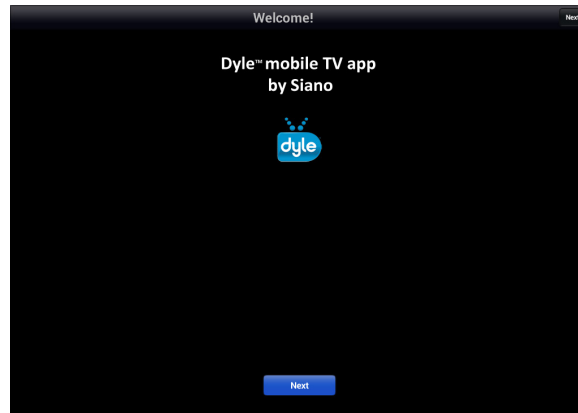
1. Install Audiovox mobiletv with Dyle™ TV app from Google Play®.
2. Locate the Audiovox mobiletv with Dyle™ TV app icon from the applications on your Android® device and open the app.



Audiovox mobiletv with Dyle™ TV app Icon

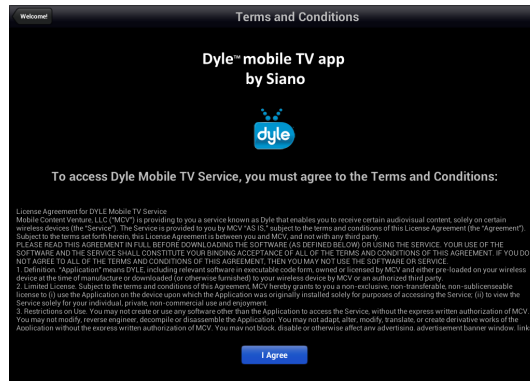
3. While connected to the Internet, complete the first time registration process using the following steps:

Step 1. When the Welcome screen appears, allow the Audiovox mobiletv with Dyle™ TV app to use your current location by pressing “OK” then Next. This will shorten the time required to Scan for channels.



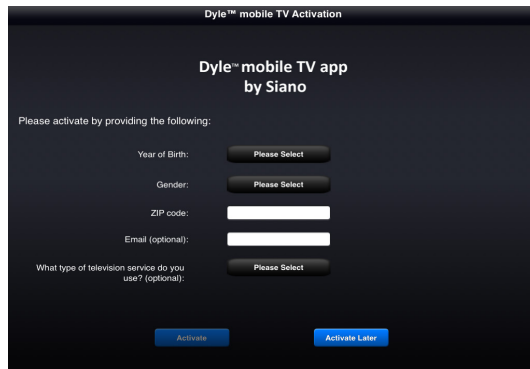
Welcome Screen

Step 2. The Terms and Conditions screen will appear. To access the Audiovox mobiletv with Dyle™ TV app service, the user must agree to the terms and conditions displayed on this screen. Press “I Agree” to continue.



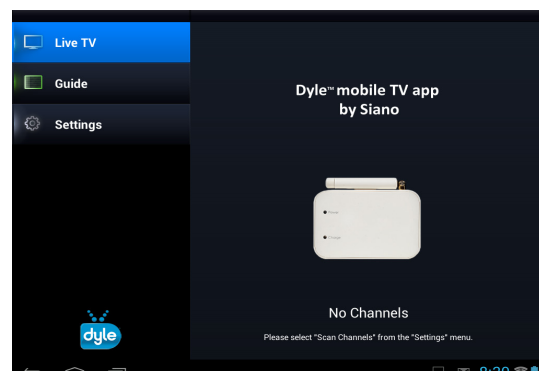
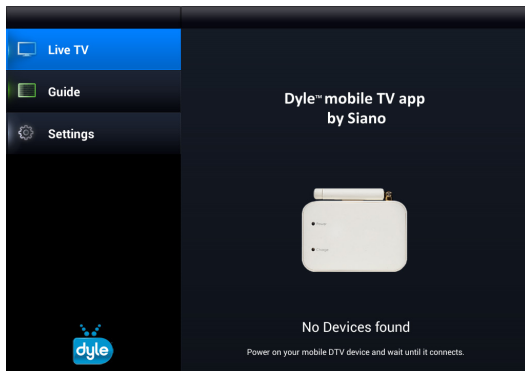
Terms and Conditions Screen

Step 3. After agreeing to the Terms and Conditions, the Audiovox mobiletv with Dyle™ TV app Activation screen will appear. Enter the requested information and press “Activate”.



Activation screen

- Step 4.** Once activated, a message will appear indicating that the Audiovox WIDTV1 Mobile TV Receiver can be connected to the Android® device. Follow the instructions on the screen:
- Power ON your Audiovox WIDTV1 Mobile TV Receiver by sliding the switch on the side to the ON position.
 - On the Android® device, press the Home button, then tap Settings > Wi-Fi® and connect to the mobile device network.



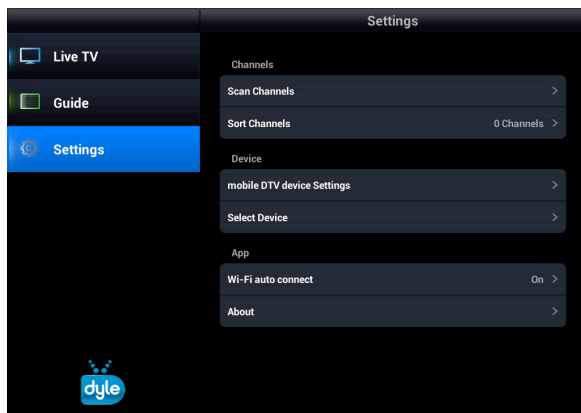
Connecting to a Mobile Device Screen

-OR-

- Power ON your Audiovox WIDTV1 Mobile TV Receiver by sliding the switch on the side to the ON position.
- Navigate to “Select Device” in the settings menu of the Audiovox mobiletv with Dyle™ TV app and select the device to connect to and a check mark will appear confirming selection.

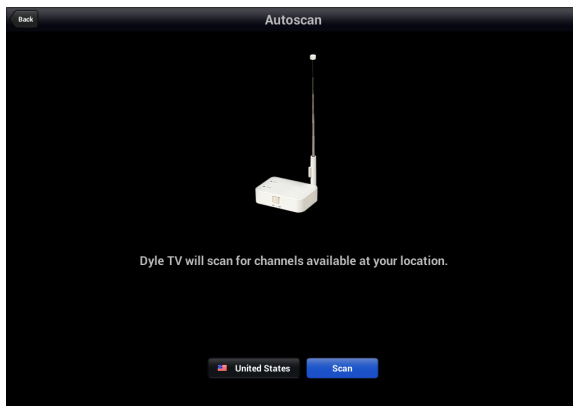
Scan for Channels

Step 1. Once the Audiovox WIDTV1 Mobile TV Receiver and the Android® device is connected, return to the Audiovox mobiletv with Dyle™ TV app and access the Settings Menu. Select Scan Channels.



Settings Menu Screen

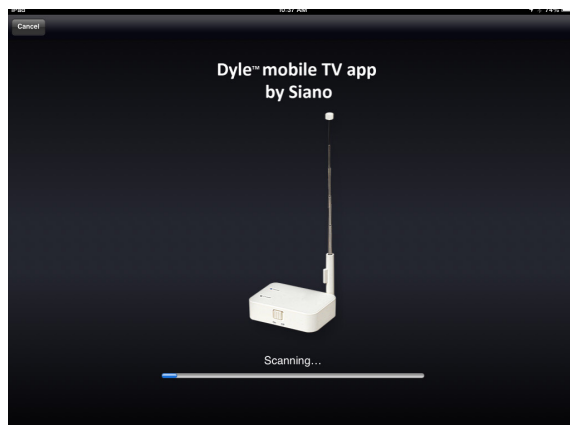
Step 2. Press the “Scan” button to perform a channel scan.



Channel Scanning Screen

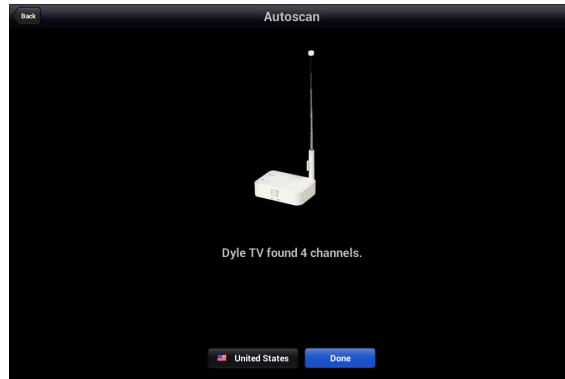
Step 3. The scan process is indicated by a progress bar at the bottom of the screen.

NOTE: *The scan process may take several minutes to complete.*



Scanning Process Screen

Step 4. When the scan process is complete, the number of found channels will be displayed. Press the “Done” button to access the list of available channels.



Scanning Complete Screen

Watch Mobile Live TV

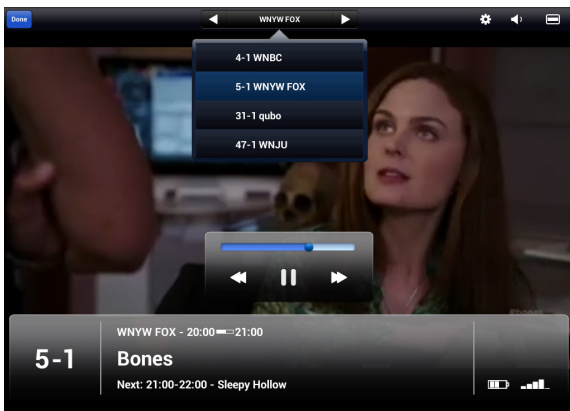
Select Live TV and the list of available channels appears on the screen. Select one of the displayed channels to watch live TV.



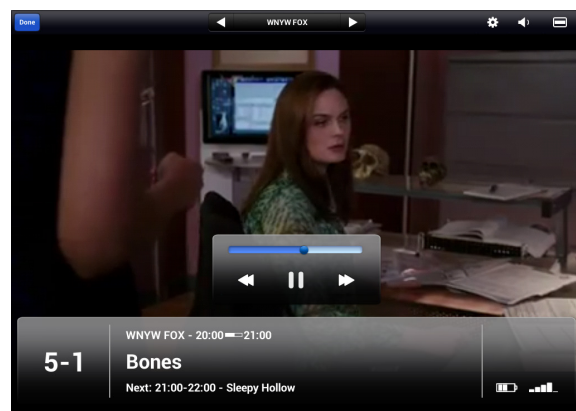
List of Available Channels

Changing Channels

To change channels while watching live TV, swipe fingertips over the screen either right or left, or after touching the screen once, use the drop down menu from the top of the screen to switch to another channel. The same action can be also performed using the left and right arrows beside the current channel name on the top bar.



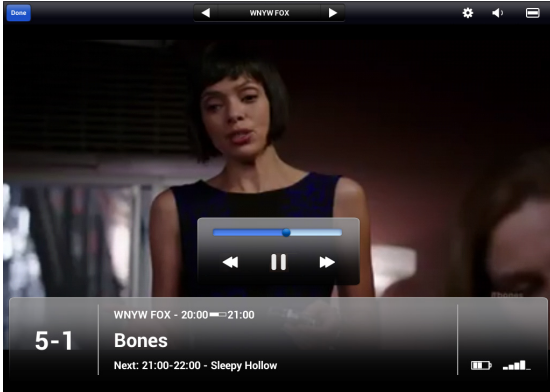
Drop Down Channel Selection Menu



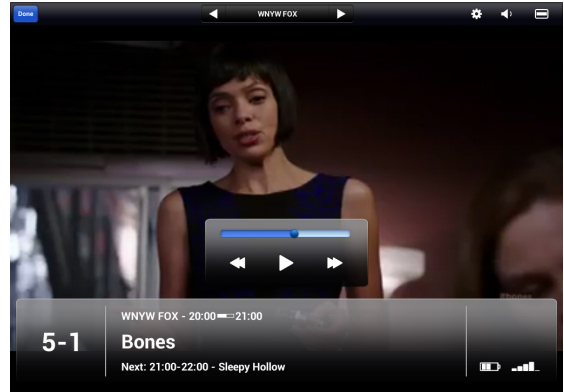
Left and Right Channel Selection Arrows

Pause Live TV

Tap the screen once while watching live TV and the controls bar will appear on the screen. Press the Pause icon to pause live TV. To continue watching the paused content, press the Play icon.





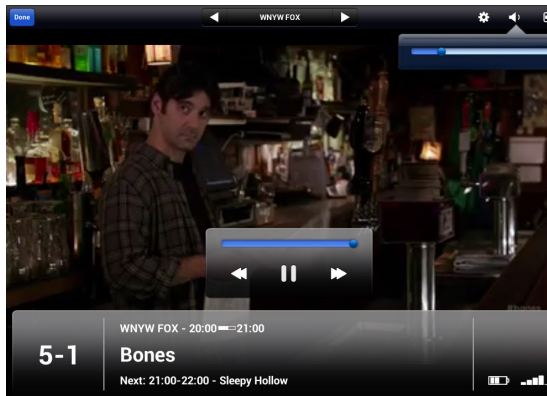
Controls Bar While Live TV is Playing



Controls Bar When Live TV is Paused


Audio Volume Control

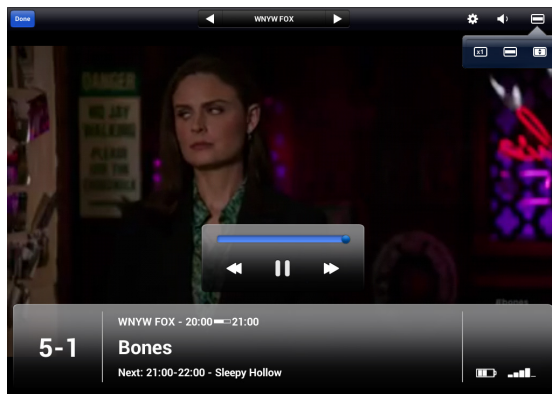
Select the Gear icon  at the top right side of the screen to adjust the advanced audio controls (ACC). Select the Audio icon  at the top right side of the screen, and use the slide switch to increase or decrease the media volume. **NOTE: The volume can also be controlled using the Android® device volume controls.**



Audio Volume Control

Playback Control

Select the Screen icon  at the top right side of the screen to adjust the picture size (Zoom).



Playback Control Drop Down Menu

Guide Menu

Select the Guide button to view available Channels.



Channel Guide Screen

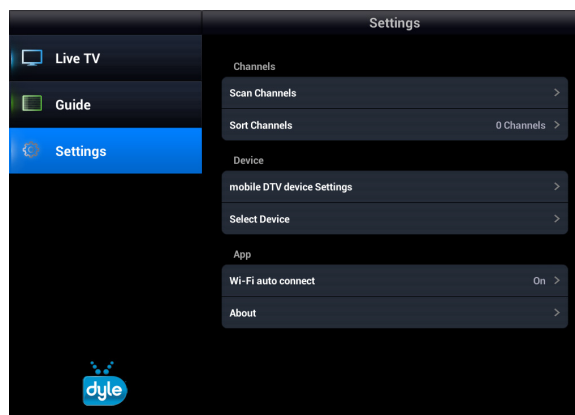
Select any of the available Channels to view program information and air times.



Channel Programming Guide Screen

Settings Menu


Select the Settings button to make adjustments to the Channel settings, Device settings and App settings.

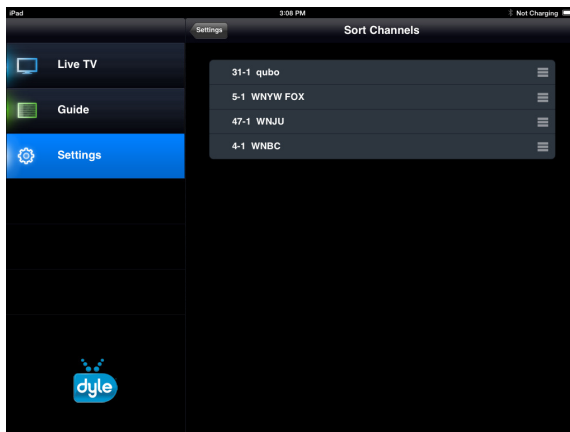


Settings Menu

Channels Sub Menu

Sort Channels

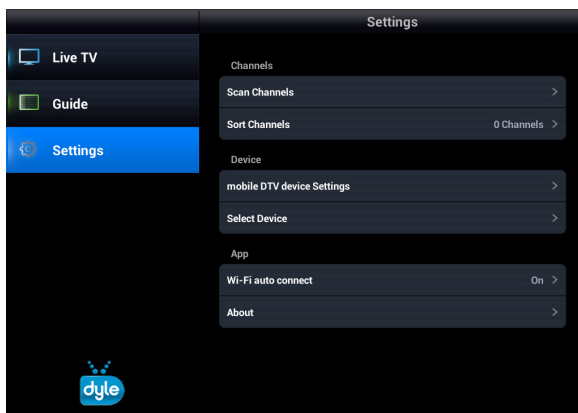
The Sort Channels feature allows the user to organize the available channels in any preferred order. Select the Sort Channels button to display the available channels. Touch and hold the  icon on the channel to be moved. Drag the channel up or down into the desired position.



Sorted Channel Menu

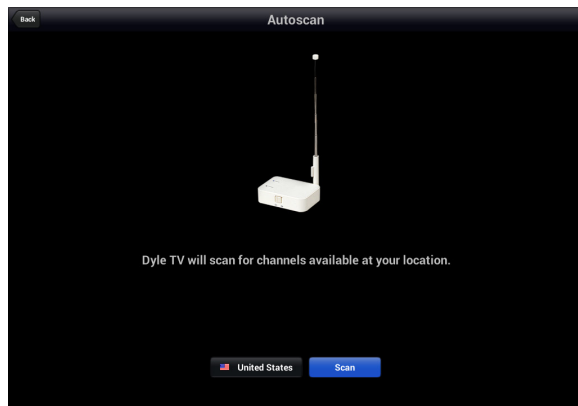
Scan Channels

Step 1. Once the Audiovox WIDTV1 Mobile TV Receiver and the Android® device are connected, return to the Audiovox mobiletv with Dyle™ TV app and access the Settings Menu. Select Scan Channels.



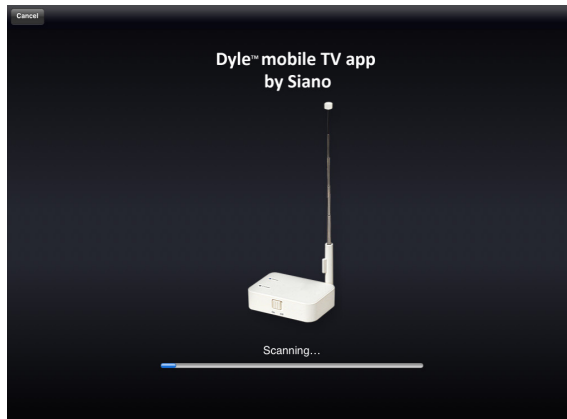
Settings Menu Screen

Step 2. Press the “Scan” button to perform a channel scan.



Channel Scanning Screen

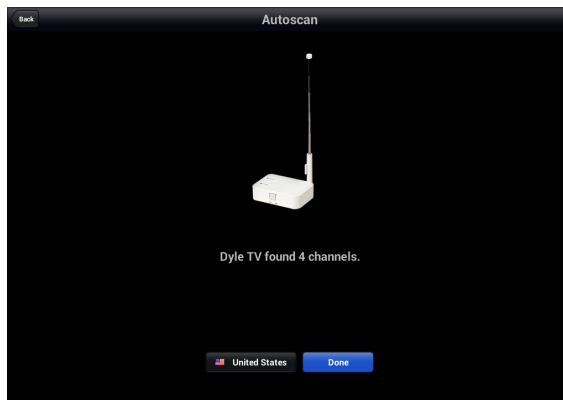
Step 3. The scan process is indicated by a progress bar at the bottom of the screen.



Scanning Process Screen

NOTE: *The channel scan process may take several minutes to complete.*

Step 4. When the scan process is complete, the number of found channels will be displayed. Press the “Done” button to access the list of available channels.

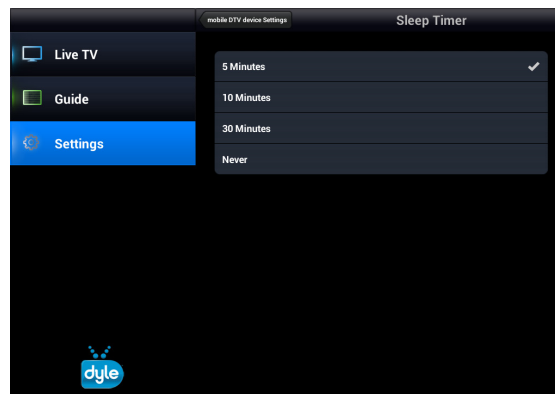


Scanning Complete Screen

Device Sub Menu - “mobile DTV device settings”

Sleep Timer


Select the Sleep Timer button to set the amount of time the Audiovox mobiletv with Dyle™ TV app and device will remain ON while not in use before shutting OFF. The user can set the Sleep Timer to 5, 10, 30 minute increments or never.

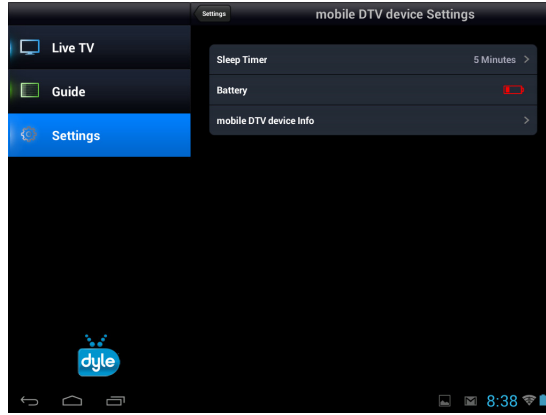


Sleep Timer Screen

Battery

This tab displays the state of the internal battery of the Audiovox WIDTV1 Mobile TV Receiver. A battery icon is displayed on the right side of the tab indicating the remaining battery life (full, half full or in need of charging).

The Battery Icon  is also displayed on the bottom right side of the screen when viewing TV programs by touching the screen or adjusting settings.



Battery Screen

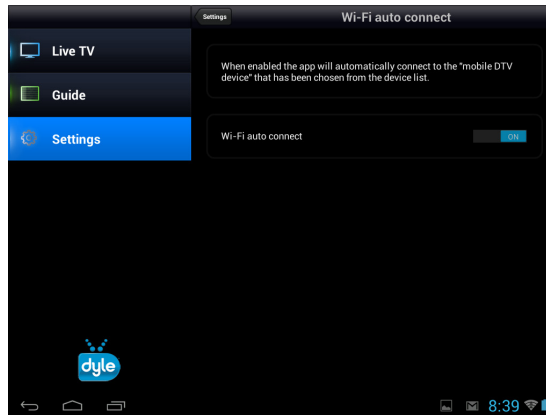
mobile DTV device info

Select the Info button to view the Firmware Version, Tuner Type and IP Address. There is also Reset button to return to factory default settings.

App Sub Menu - "Wi-Fi auto connect"

Wi-Fi auto connect

When enabled the app will automatically connect to the Audiovox WIDTV1 Mobile TV Receiver that has been chosen from the device list.



Wi-Fi Auto Connect Screen

App Sub Menu - "About"

About

Select the About button to view information about Audiovox mobiletv with Dyle™ TV app.



TROUBLESHOOTING

Cannot connect to WIDTV1's Wi-Fi®

- Turn OFF the Audiovox WIDTV1 Mobile TV Receiver and then turn it ON again.
- Go to the network manager in your phone or tablet and search for the "Audiovox MobileTV xxxxxx" network.
- Make sure that the mobile device is not in flight/airplane mode.

Poor Image Quality

- Try to improve the antenna location (near a window if possible).
- Scan for available stations with strong signals again.

Application is stuck or is not working

- a. Close the Audiovox mobiletv with Dyle™ TV app
- b. Turn the WIDTV1 Mobile TV Receiver OFF
- c. Turn the WIDTV1 Mobile TV Receiver ON and reconnect to the Wi-Fi® network
- d. Open the Audiovox mobiletv with Dyle™ TV app again

Scan did not locate a TV channel

- Try to improve the antenna location (near a window if possible).
- For up-to-date information on what stations may be available in your area, please visit www.dyle.tv/coverage-map.

"No Content" message appears

- Ensure that the Android® device or tablet is within the Wi-Fi® range of the WIDTV1 Mobile TV Receiver.
- Try to improve the antenna location (near a window if possible).
- For up-to-date information on what stations may be available in your area, please visit www.dyle.tv/coverage-map.

Application does not recognize the device

- Close the application, turn the WIDTV1 Mobile TV Receiver OFF and back ON, reconnect to the Wi-Fi® and open the application again

While using WIDTV1 Mobile TV Receiver, TV reception suddenly stops

- Make sure that the blue LED is ON
- If it is not on, this means that the battery is either empty or has only 10 more minutes of operation; charge the battery until the red charging LED turns OFF.

NOTES:

- a. *Reception inside buildings may be sub-optimal; it is recommended that the WIDTV1 Mobile TV Receiver is placed near a window.*
- b. *Application may ask for a "Firmware Upgrade". If asked, accept request. WIDTV1 Mobile TV Receiver will reboot and when complete.*
- c. *The WIDTV1 Mobile TV Receiver can only be used with one smartphone or tablet at a time. It is recommended to "Forget" the Audiovox MobileTV network on original device Wi-Fi® manager before connecting the WIDTV1 Mobile TV Receiver to another device.*





AUDIOVOX®
ELECTRONICS CORP.

12 MONTH LIMITED WARRANTY

Applies to Audiovox Mobile TV Receiver

AUDIOVOX ELECTRONICS CORP. (the Company) warrants to the original retail purchaser of this product that should this product under normal use and conditions, be proven defective in material or workmanship within 12 months from the date of original purchase, such defect(s) will be repaired or replaced with reconditioned product (at the Company's option) without charge for parts and repair labor.

To obtain repair or replacement within the terms of this Warranty, the product is to be delivered with proof of warranty coverage (e.g. dated bill of sale), specification of defect(s), transportation prepaid, to the Company at the address shown below.

This Warranty does not extend to the elimination of externally generated static or noise, batteries or to costs incurred for installation, removal or reinstallation of the product. The warranty does not include damage to the vehicle's electrical system, audio/visual devices, speakers or accessories. The warranty does not cover damage caused by environmental or abnormal conditions or changes necessitated by modification of the service provider.

The Company does not warrant that this product cannot be compromised or circumvented. THE EXTENT OF THE COMPANY'S LIABILITY UNDER THIS WARRANTY IS LIMITED TO THE REPAIR OR REPLACEMENT PROVIDED ABOVE AND, IN NO EVENT SHALL THE COMPANY'S LIABILITY EXCEED THE PURCHASE PRICE PAID BY THE PURCHASER FOR THE PRODUCT WITHOUT INSTALLATION LABOR.

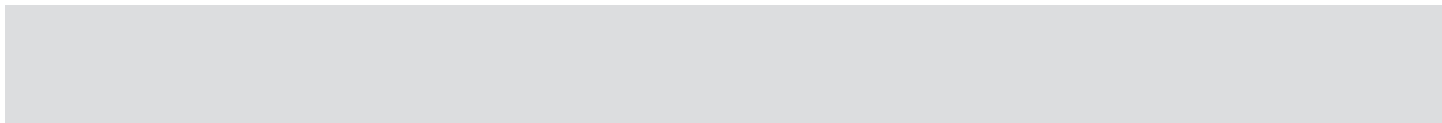
This Warranty is in lieu of all other express warranties or liabilities. ANY IMPLIED WARRANTIES, INCLUDING ANY IMPLIED WARRANTY OF MERCHANTABILITY OR FITNESS FOR A PARTICULAR PURPOSE, SHALL BE LIMITED TO THE DURATION OF THIS WRITTEN WARRANTY. ANY ACTION FOR BREACH OF ANY WARRANTY HEREUNDER INCLUDING ANY IMPLIED WARRANTY OF MERCHANTABILITY OR FITNESS FOR A PARTICULAR PURPOSE MUST BE BROUGHT WITH IN A PERIOD OF 12 MONTHS FROM DATE OF ORIGINAL PURCHASE. IN NO CASE SHALL THE COMPANY BE LIABLE FOR ANY CONSEQUENTIAL OR INCIDENTAL DAMAGES FOR BREACH OF THIS OR ANY OTHER WARRANTY. No person or representative is authorized to assume for the Company any liability other than expressed herein in connection with the sale of this product.

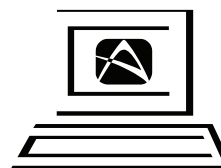
THE COMPANY DOES NOT PROVIDE AND THIS WARRANTY DOES NOT EXTEND TO ANY BROADCAST TELEVISION SERVICE. THE COMPANY DOES NOT ASSUME RESPONSIBILITY FOR ANY BROADCAST SERVICE INCLUDING THAT OF DYLE TV OR TO ANY DOWNLOADABLE APPLICATIONS BY SIANO, DYLE TV, OR OTHERS. PURCHASER ACCEPTS AND ASSUMES FULL RESPONSIBILITY FOR SUCH SERVICES.

Some states do not allow limitations on how long an implied warranty lasts or the exclusion or limitation of incidental or consequential damage so the above limitations or exclusions may not apply to you. This Warranty gives you specific legal rights and you may also have other rights which vary from state to state.

Audiovox Electronics Corporation, 150 Marcus Blvd., Hauppauge, New York 11788 - 1-800-645-4994

128-9248





For Customer Service
Visit Our Website At
www.audiovoxproducts.com
Product Information, Photos,
FAQ's Owner's Manuals

