

ADVENT®

ESCNAV2

Installation Instructions

Ford Escape

Please read this manual thoroughly before installation.

This manual shows a typical installation. Your vehicle may vary. Use caution and if unsure seek professional assistance.

Warning

Before head unit removing, make sure ACC power is off.

Cover all surfaces with tape or plastic protection film to protect against scratching and damage. Advent / Voxx is in no way responsible for any damage incurred during installation. This product has been validated in the vehicles listed on the application guide only. Consult Technical support at 800-323-4815 if you have any questions.



Prior to Installation:

Care must be taken when installing this accessory to ensure damage does not occur to the vehicle. The installation of this accessory should follow approved guidelines to ensure a quality installation. Read entire instructions thoroughly before starting.

This document covers such items as:-

- Vehicle Protection (use of covers and blankets, cleaning chemicals, etc.).
- Vehicle Disassembly/Reassembly (panel removal, part storage, etc.).
- Electrical Component Disassembly/Reassembly (battery disconnection, connector removal, etc.)

NOTES:

Removed Parts: Inspect the vehicle for any damage.

Place all removed parts on a protected surface in an area where they will not be damaged.

Connectors: When disconnecting connectors, do not pull on the wires; pull on the connectors.

Vehicle Preparation and Protection

Do not touch the positive terminal with any tool when removing

Be sure ignition key is in the OFF position during install. Do not disconnect ANY airbag connectors or indicators. Doing so may result in activating a diagnostic code. These codes will require the dealer to perform the reset procedure and may be charged a dealer fee. If you are unsure of any vehicle trim removal process consult the OEM service manual.

Removing vehicle trim panels in extreme hot and cold climate could result in some vehicle damage. Use care when removing all vehicle trim.

Using tape on vehicle trim panels could help limit any scratches and or marring. Use plastic trim panel removal tools whenever possible.

The instructions included in this kit are current at the time of printing. It is designed as a guide to help make the installation of this product successful. Always use caution and ask for assistance if you are not sure how to proceed. Voxx International is not responsible for any damage that may occur during installation or any changes to the vehicle interior.

Components :

GPS Antenna



HDMI



DVI-I



Escape /Kuga
T- Harnesses



USB



Screw



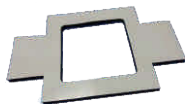
Connection Unit



Interface Module



VHB tape



Installation Tools: (NOT INCLUDED)



Screw components

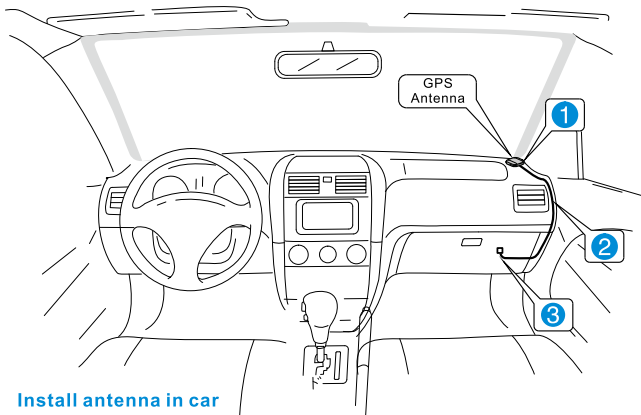


Plastic Tool



Towel

Wiring diagram



Install antenna in car

GPS antenna installation

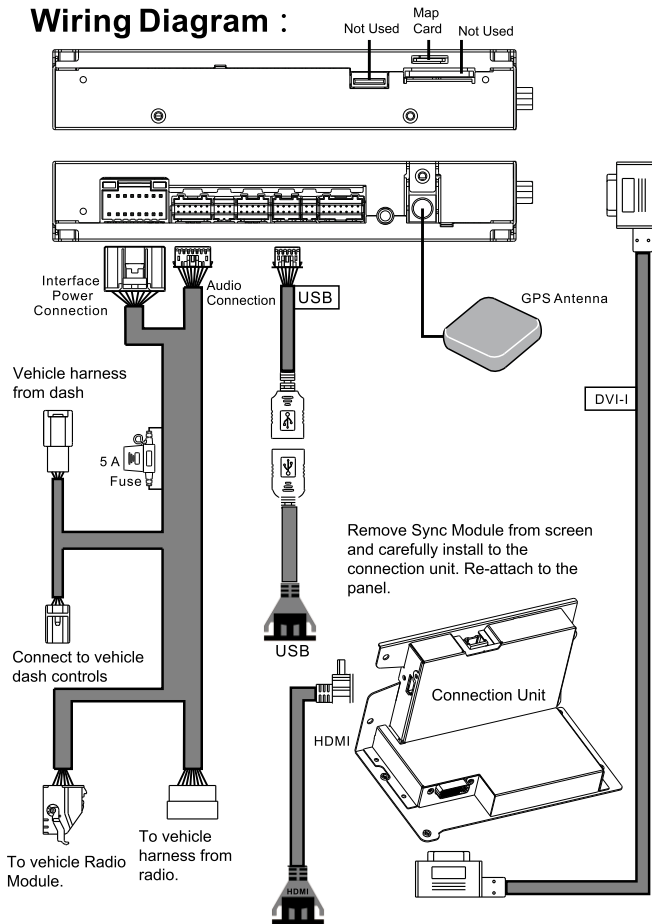
1. Find a suitable mounting location. Clean the area with alcohol and use a strong double sided tape to attache the antenna to the dash.

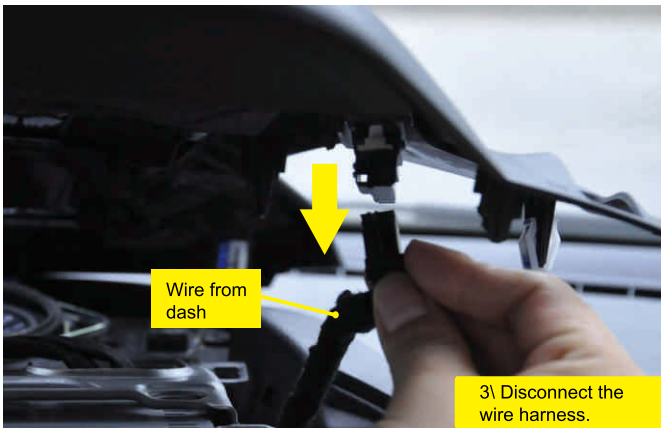


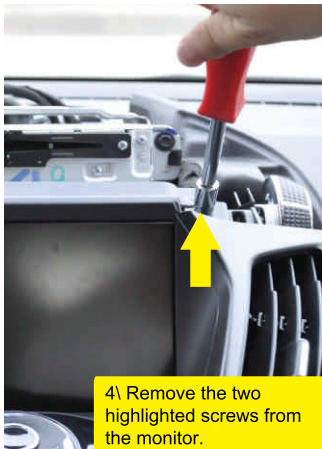
2. carefully route the antenna cable to the GPS Module. Insure you do not interfere with any airbags or other saftey systems in the vehicle. Do not pinch or pull on the antenna cable as this can damage it.

Installation of the GPS antenna inside the vehicle passenger compartment may interfere with reception/ If you must install it inside the vehicle insure it is not blocked by metal and has a clear view of the sky. If reception is poor try another location.

Wiring Diagram :



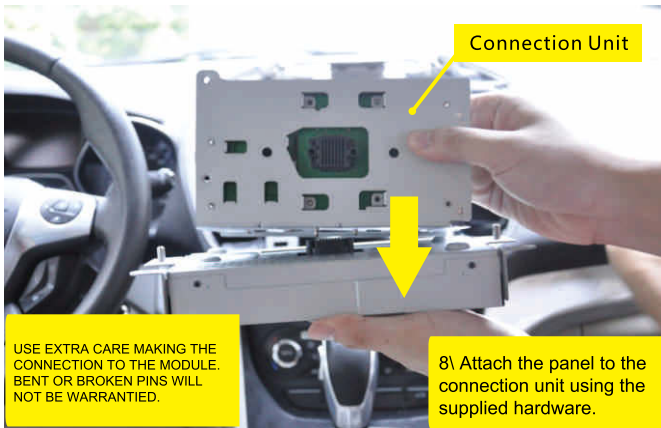
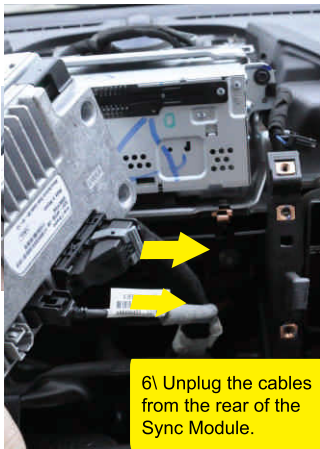




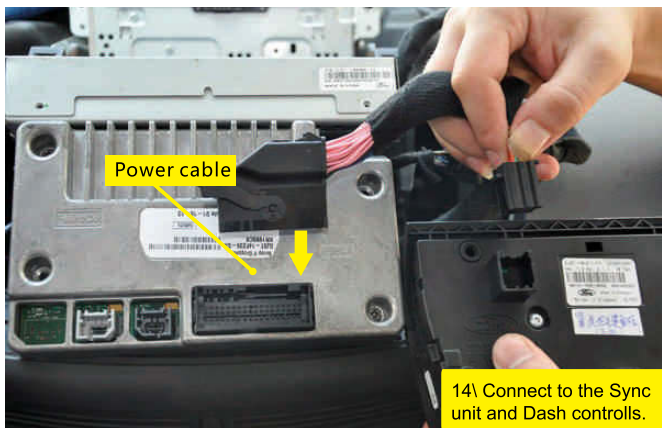
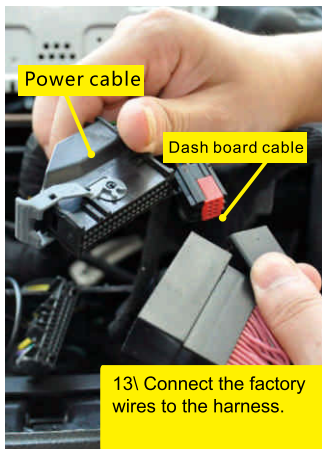
4\ Remove the two highlighted screws from the monitor.

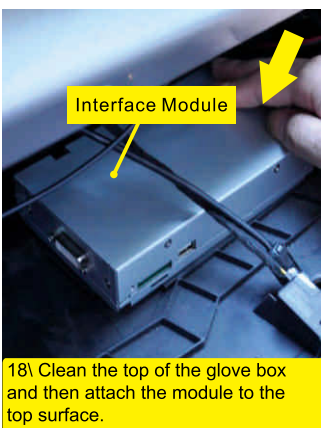
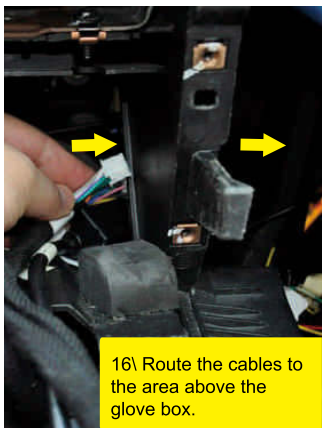
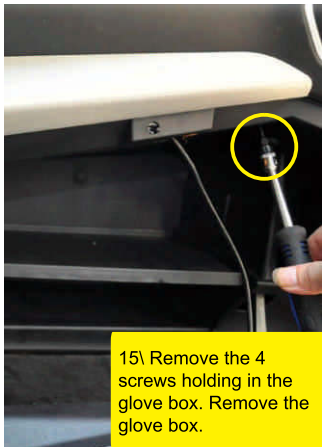


5\ Carefully release the retainer clips holding the trim in place.



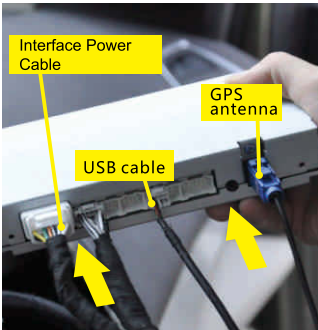








19\ Find a suitable location for the HDMI and USB jacks. These should be located together in order to use HDMI phone adapters. Drill a 1.25" hole for each. Insert from the front and route the usb cable to the Nav module behind the glove box and Connect to the module. Route the HDMI cable to the Sync Module location.

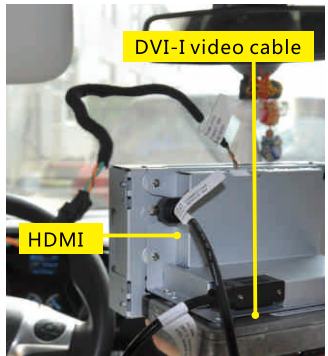


Interface Power Cable

GPS antenna

USB cable

20\ Install the GPS antenna and make all connections at the nav module.



DVI-I video cable

HDMI

21\ Connect the HDMI and DVI cable to the Connection Interface.

