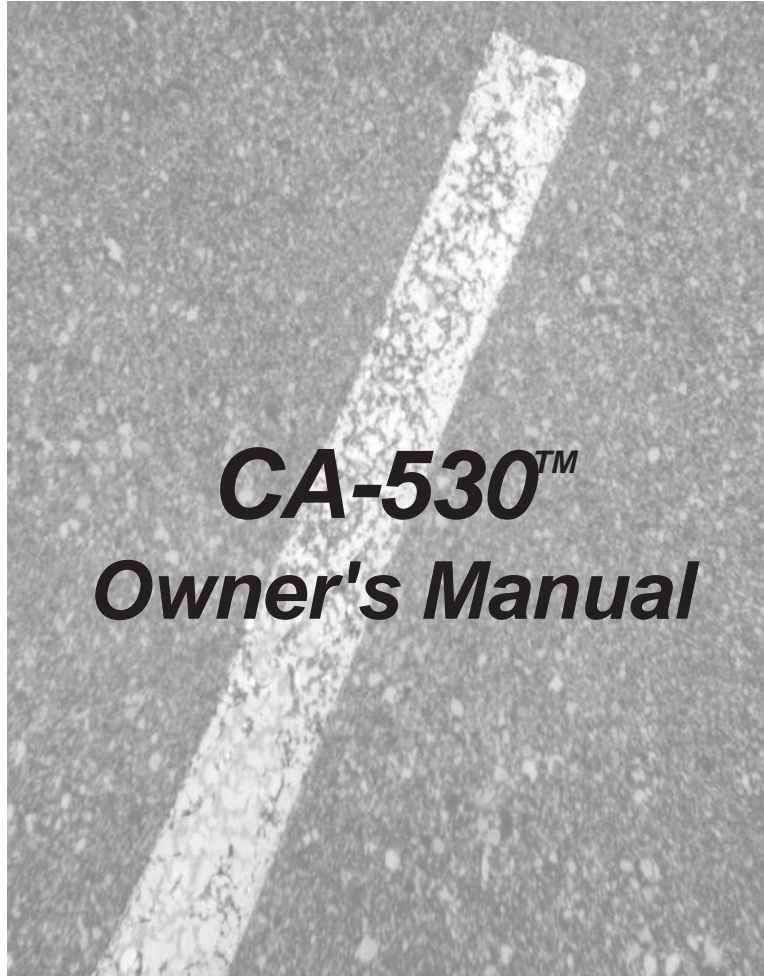


# **CODE//ALARM®**

Technology that talks to cars and trucks.™

***Remote Vehicle Control System***



## ***Keyless Entry & Remote Start System***

**IMPORTANT NOTE:** The operation of the Security and Convenience System as described in this manual is applicable to most vehicles. However, due to the configuration of some vehicles, some functions AND/OR SAFETY PRECAUTIONS may not apply. Please see your installing dealer for more information.

## 2 **Table of Contents**

---

|  |           |
|--|-----------|
| <b>Features and Benefits of the Code Alarm CA-530™</b> .....   | <b>3</b>  |
| Note: any feature or function noted with “optional” requires additional installation labor, components and installation cost. See your dealer for details. |           |
| <b>Using the Keyless Entry features</b> .....  | <b>4</b>  |
| Locking the Vehicle*   |           |
| <i>Starter Disable</i>   |           |
| Unlocking the Vehicle*   |           |
| Two-Stage Door Unlock (optional)*  |           |
| Activating the Trunk Release Feature*  |           |
| Turning on the Vehicle Headlights (optional)*  |           |
| Using the Car Finder Feature   |           |
| Personal Protection Alarm (Panic)  |           |
| <b>Using the Remote Start features</b> .....   | <b>6</b>  |
| Starting Your Vehicle  |           |
| <i>If your vehicle stalls or does not start</i>  |           |
| Remote Start/Stop feature  |           |
| Entering the Vehicle While it is Running via Remote Start  |           |
| Valet/Service Mode   |           |
| Pre-Heating or Pre-Cooling the Interior of the Vehicle   |           |
| Turning on the Rear-Window Defroster (optional)*   |           |
| Using the “Quick-stop” Feature   |           |
| Remote Start Safety Features   |           |
| <b>Automatic Convenience Options</b> .....   | <b>7</b>  |
| <b>System Maintenance</b> .....  | <b>7</b>  |
| Changing the Remote Control Battery  |           |
| <b>Using Turbo Timer</b> .....   | <b>9</b>  |
| <b>Basic Troubleshooting</b> .....   | <b>9</b>  |
| <b>Emergency Disarm Procedure</b> .....  | <b>10</b> |
| Emergency Disarm Button Location   |           |
| Installer Programmed Options   |           |
| <b>Your Code Systems, Inc. Limited Lifetime Warranty</b> .....   | <b>11</b> |

*\*May require additional installation labor, components and installation cost*

## **Features and Benefits of the Code Alarm CA-530™** 3

---

### ■ **Two Easy-to-Use Weather-Resistant Remote Controls**

The remote control transmitters included with the Code Alarm CA-530™ utilize durable, moisture resistant cases and sealed rubber buttons for reliability and long life. Rolling code technology prevents the transmitter signals from being duplicated. The button functions are clearly labeled to make the Code Alarm CA-530™ simple to operate.

### ■ **Starter Disable**

The Code Alarm CA-530™ protects your vehicle from theft by disabling the starter when the vehicle is locked using the remote control transmitter.

### ■ **Remote Keyless Entry**

The Code Alarm CA-530™ conveniently locks and unlocks the vehicle's doors and opens the trunk or hatch by remote control (vehicle must be equipped with power doors and trunk).

### ■ **Personal Protection Features**

Remote Panic Alarm, Headlight Control, Illuminated Entry, and Car Finder are among an array of features that enhance personal safety.\*\*

### ■ **Remote Start**

The Code Alarm CA-530™ allows you to warm up your vehicle and preheat or pre-cool the interior with the press of a button on the remote control.

### ■ **PowerRange™ Antenna**

You can operate the Code Alarm CA-530™ from distances of up to 1/8 mile. Remote-start your vehicle from the safety of your home, apartment or office building.

### ■ **Illuminated Entry**

When the system is UNLOCKED, the vehicle courtesy lights will turn on for 1 minute, or until the vehicle is started or the system is re-locked.

### ■ **Illuminated Exit**

When turning the vehicle's ignition off, the vehicle courtesy lights will turn on for 1 minute, or until the Code Alarm CA-530™ is armed.

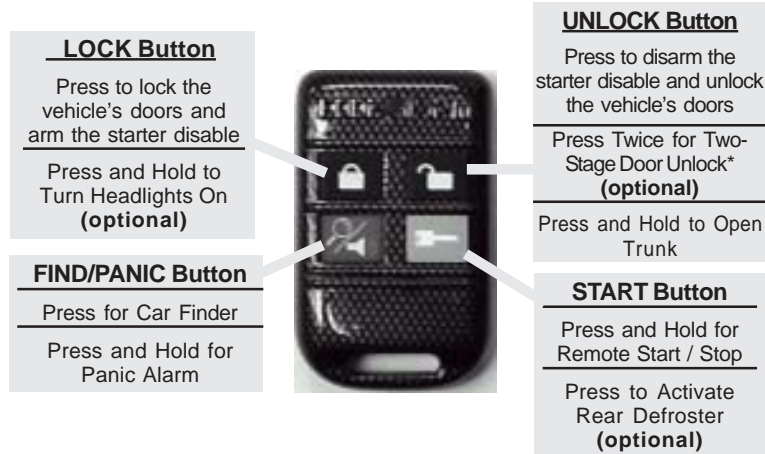
### ■ **Ignition Lock**

If all doors are closed and the vehicle is started with the ignition key, the doors will automatically lock. If vehicle is started with vehicle doors open, the doors will not lock and will remain unlocked even after doors are closed.

### ■ **Ignition Unlock**

When removing the key from the ignition, the doors will automatically unlock.

## 4 **Using the Keyless Entry features**



*Note: DO NOT use excessive pressure when pressing transmitter buttons. Press buttons only until transmitter indicator light comes ON. Pressing harder after light comes ON can permanently damage the transmitter button pads*

### **Locking the Vehicle Doors**

To lock the doors, exit the vehicle, close all doors, then press\* the LOCK button. The status indicator (blue warning light on the dash) will blink steadily, once per second, if equipped. **Starter Disable** will activate when the status indicator begins to blink.

### **Unlocking the Vehicle Doors**

To unlock the vehicle's doors, press the UNLOCK button. The horn will "honk" and the parking lights will flash once, and the doors will unlock. **Starter Disable** disengage

### **Two-Stage Door Unlock (optional)**

If this feature is enabled on your system, pressing UNLOCK one time will unlock only the driver's door. Press UNLOCK again within 1 minute to unlock all doors.

### **Activating the Trunk Release Feature**

Press and hold\*\* UNLOCK to open the vehicle trunk or hatch (if equipped and connected). If this button is used to operate another accessory, the accessory will stay active for as long as the button is held.

\*Throughout this manual, 'press' refers to pressing for less than 1 second; 'press and hold' refers to pressing for more than 1 second.

\*\*If you have chosen the Silent Arming Option, the horn will not sound when locking or unlocking until the appropriate button is pressed a second time.

***Turning on the Vehicle Headlights (optional)***

Press and hold the LOCK button. The vehicle's headlights will come ON and remain ON for 20 seconds or until you press the LOCK button again.

***Using the Progressive Car Finder Feature***

Press the FIND/PANIC button on the remote control to locate your vehicle. The horn will emit five short "honks" at low volume, increasing in volume each of three times the button is pressed.

***Personal Protection Alarm (Panic)***

Press and hold the FIND/PANIC button to activate the vehicle horn and parking lights for 30 seconds. (If the vehicle horn is connected, the horn will "honk" a random pattern for 30 seconds.) Press any remote control button to turn off the "Personal Protection Alarm".

## 6 **Using the Remote Start feature**

---

### **Starting Your Vehicle**

The remote start function is activated by pressing and holding the START button for 2 seconds on the remote control. The system will check the vehicle to ensure that it is safe to start, and if all safety parameters are correct, the engine will start within 5 seconds (diesel engines will take longer.) Press and hold the START button again to turn off the vehicle. While in Remote Start mode, the vehicle parking lights will remain ON. The vehicle will run for 12 or 25 minutes, depending on run time selected by your installer.

#### *If your vehicle stalls after Remote Start...*

If the vehicle stalls or does not start, the Code Alarm CA-530™ will pause for 5 seconds, then try 3 more times to start the vehicle (a total of four attempts). The system pauses 5 seconds between each start attempt. If the vehicle does not start after the fourth attempt, the Code Alarm CA-530™ will abort the start process. See Remote Start Safety Features on the following page for additional no start conditions.

Your vehicle can be started by remote control whether the vehicle is locked or unlocked.

### **Entering the Vehicle While It is Running via Remote Start**

1. Press UNLOCK to unlock the door(s) and turn off the starter disable (if it is not already off).
2. Enter the vehicle. Do not press the brake pedal.
3. Insert the key into the ignition and turn to the ON position.
4. Press the brake pedal. The remote starter disengages and the vehicle will operate normally.

### **Remote Start / Stop Feature**

Press and hold the START button on the remote control.

If all safety parameters are correct, the engine will start within 5 seconds (diesel engines will take longer.) Press and hold START again to turn off the vehicle. (Turn to page 6 for more on remote start features.)

### **Valet/Service Mode**

You can turn off all remote start functions and prevent the starter disable by engaging the Valet/Service Mode:

- To engage Valet mode, turn the ignition key to the ON position (last position before start) and press the LOCK and UNLOCK buttons on the remote control simultaneously. If installed, the blue status light will blink to indicate Valet mode
- To disengage Valet mode, turn the ignition key to the ON position (last position before start) and press the LOCK and UNLOCK buttons on the remote control simultaneously. If installed, the blue status light will stop blinking to indicate Valet mode has been terminated.

***Pre-Heating or Pre-Cooling the Interior of the Vehicle***

Before exiting the vehicle, set the vehicle's temperature controls to the desired setting and operation. After the Code Alarm CA-530™ starts the vehicle, the heater or air-conditioning will activate and heat or cool the interior to your setting.

***Turning on the Rear-Window Defroster (optional)***

While the vehicle is running via remote start, press the START button on the remote control. The vehicle defroster will activate and run for 10 minutes, or for your vehicle's preset time limit

***Using the "Quick-stop" Feature***

If you want to make a short stop and leave your vehicle running (to keep the interior warm or cool), the quick stop feature allows you to do this while keeping your vehicle secure and your keys with you.

***To engage Quick-stop:***

1. Stop the vehicle and place the transmission in PARK.
2. With your foot off the brake pedal, press the START button on the remote control. The parking lights will turn on, indicating that the vehicle is now running via remote start.
3. Remove the keys from the ignition and exit the vehicle. Press the LOCK button on the remote control to lock the vehicle doors if desired.

**Note:** Do not leave children or animals unattended in the vehicle when using the quick stop feature.

***Remote Start Safety Features***

For safety and security reasons, the Code Alarm CA-530™ will not allow the vehicle to start if the following conditions are present:

- The vehicle hood is opened
- The system is in the Valet/Service mode
- The brake is pressed and held

For safety and security reasons, the CA-530 will terminate remote start run time and shut the vehicle off if the following conditions are present:

- The brake pedal is pressed before the vehicle ignition is turned on with the key
- The engine reaches 3 times its normal idle\*

As a safety precaution, the vehicle will shut off if left unattended for 12 or 25 minutes, depending on the time preset by your installer.

## 8 ***Basic Troubleshooting***

---

This section outlines some of the basic issues you may experience while becoming used to the Code Alarm CA-530™. If you have a problem that is not covered by this section, please consult your installer.

| Symptom                      | Problem   | Solution  |
|------------------------------|---|---|
| Remote control does not work | Weak or dead battery  | Change battery  |
|                              | Remote control not programmed   | See Dealer  |
| System will not remote start | Hood is open or hood switch is out of alignment - system emits two "chirps" when remote start button is pushed; | Close hood; see Dealer to adjust hood safety switch   |
|                              | System is in Valet/Service Mode - system emits two "chirps" when remote start button is pushed;                 | Exit Valet/Service mode by turning ON ignition key and pressing UNLOCK button on remote control |
|                              | Brake is pressed  | Release brake   |
|                              |   |   |

### ***Emergency Disarm Procedure***

---

If your remote control is lost or fails to function, use this procedure to disarm the Code Alarm CA-530™ and start your vehicle.

1. Use the keys to enter the vehicle.
2. Insert the key into the ignition and turn to the ON position.
3. Locate and press the emergency override button.  
The starter disable will turn off and then you will be able to start your vehicle.

**Your Emergency Disarm Button is located:**

---

This section outlines some of the basic issues you may experience

**Changing the Remote Control Battery**

The 12-volt alkaline battery(GP-23A) supplied in your remote control should last approximately one year, depending on usage. When the battery begins to weaken, you will notice a decrease in range, or the distance from your vehicle that your remote transmitter will operate. Follow the instructions below to change the remote transmitter battery.

1. Insert the edge of a coin into the slot at the side of the remote control. Twist the coin to pry the remote control halves apart.
2. Remove the old battery and replace with a new one. Be sure to observe the (+) and (-) signs in the battery compartment.
3. Carefully snap the case halves back together, then test the remote control.

**Remote Control Button Pad Care**

DO NOT use excessive pressure when pressing transmitter buttons. Press buttons only until transmitter indicator light comes ON. Pressing harder after the light comes on can permanently damage the transmitter button pads.

**FCC COMPLIANCE**

This device complies with Part 15 of the FCC rules and with RSS-210 of Industry Canada. Operation is subject to the following two conditions:

1. This device may not cause harmful interference, and
2. This device must accept any interference received, including any interference that may cause undesired operation.

**Warning!**

Changes or modifications not expressly approved by the party responsible for compliance could void the user's authority to operate the equipment.

### ***Code Systems, Inc. Limited Lifetime Warranty***

A Code Systems Inc. ("CODE") vehicle comfort, convenience and security system sold to a retail consumer purchaser by an authorized dealer of CODE and installed by an authorized dealer of CODE is warranted by CODE to the original retail consumer purchaser to be free from defects in workmanship and materials for the lifetime of the vehicle in which the system was originally installed.

A CODE system sold to a retail consumer purchaser by an authorized dealer of CODE and installed by a party other than an authorized dealer of CODE is warranted by CODE to the original retail consumer purchaser to be free from defects in workmanship and materials for the lifetime of the vehicle. Defects caused by or related to the improper installation of the system are not covered by this or any other warranty.

The duration of this warranty described above applies to all components of the system except for: switches, indicator lights, transmitter(s) and accessories purchased separately.

Transmitters, exclusive of the transmitter case, are warranted by CODE to the original retail consumer purchaser to be free from defects in workmanship and materials for the lifetime of the vehicle in which the system was originally installed.

Switches, indicator lights, and transmitter cases are warranted to the original consumer purchaser for a period of one (1) year from the date of purchase when the system is installed by an authorized CODE dealer.

Code system accessories are covered by the warranty supplied with the accessory.

Wiring harnesses altered by installation and transmitter batteries are not covered by this or any other warranty.

This warranty is non-transferable, non-assignable and is completely voided when the system is removed from the car in which it was originally installed. If the vehicle in which the system was originally installed is transferred to another party, this warranty no longer applies.

This warranty does not apply to any product damaged by accident, physical or electrical abuse, improper installation, alteration, any use contrary to its intended function, unauthorized service (i.e. service by anyone other than CODE or its authorized service personnel), fire, flood, lightning or other acts of God.

Should a product be found to be defective during the warranty duration, CODE will repair or replace the system or any part of the system that CODE agrees is defective without charge to the retail consumer purchaser of the system during the first year of the warranty period. After the first year of the warranty period has expired CODE will repair or replace the system or any part of the system that CODE agrees is defective for a fee of \$10.00 to cover shipping and handling charges.

In order for the system to be repaired or replaced under the terms of this warranty, the defective product must be returned to an authorized CODE dealer and accompanied by a copy of the original retail sales receipt. The date of purchase and year, make and model of the vehicle in which the security system was originally installed must be clearly indicated on the sales receipt.

CODE shall not be held responsible for any removal and/or reinstallation charges of a defective system, damage to or theft of the vehicle or its contents, or any incidental or consequential damages caused by any failure of the system to function properly. Under no circumstances should this warranty, or system covered by it, be construed as an insurance policy against loss. CODE neither assumes nor authorizes any person or organization to make ANY WARRANTIES or assume any liability in connection with the sale, installation, or use of this system. This is the complete CODE warranty and no other warranty exists.

The warranty identified in this form is exclusive and CODE makes no other warranties expressed or implied for any goods or services provided by CODE. CODE specifically and expressly excludes any other warranties including the fitness for a particular purpose and all warranties of merchantability. The customers sole and exclusive remedy for any and all claims against CODE arising out the customers use of any CODE system shall be as delineated in the warranty set forth above. CODE shall not be liable to any customer or any other person or entity for any direct or indirect, consequential, special or exemplary damages arising out of or in connection with the customers use of, or inability to use, or misuse of any CODE provided system.

Some states do not allow the exclusion or limitation of incidental or consequential damages, so the above limitation may not apply to you. This warranty gives you specific legal rights, and you may also have other rights which vary from state to state.

